

Accessing the OPITO DSI Portal *Learner*



Registration

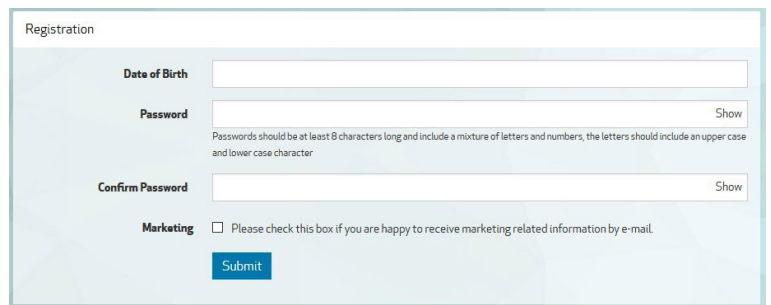
Please contact your local OPITO-Approved Training Provider, who will be able to register you on the OPITO DSI Portal.

When registered for the first time on the OPITO DSI Portal, you will receive a welcome email with a unique link to complete the registration process.

Enter your Date of Birth as a secondary security measure. Three invalid attempts will lock your registration: if this happens, contact your Training Provider to unlock your account. At the same time, ensure that they have entered your details correctly.

Set a secure password, making sure it is at least 8 characters long and contains a mix of uppercase and lowercase characters and numbers.

You also have the option to receive Marketing information via email. Check the box to opt in and then select 'Submit' to continue.



The screenshot shows a registration form titled "Registration". It includes the following fields and options:

- Date of Birth:** A text input field.
- Password:** A text input field with a "Show" button to the right. Below it, a note states: "Passwords should be at least 8 characters long and include a mixture of letters and numbers, the letters should include an upper case and lower case character".
- Confirm Password:** A text input field with a "Show" button to the right.
- Marketing:** A checkbox with the text "Please check this box if you are happy to receive marketing related information by e-mail."
- Submit:** A blue button at the bottom.

Device and Browser Compatibility

The OPITIO DSI portal has been developed to be fully compatible with all modern internet browsers and to display correctly on smartphones, tablets, netbooks, laptops and full desktop monitors.

Log on to the Portal

Connect to URL – <https://opito-bosiet.atlasknowledge.com>

Enter your email address and password, press Enter or select the Login button to continue ❶.

Further Information / Help

Links to view the Terms & Conditions are on the log in page ❷, along with links to both Atlas Knowledge's and OPITO's web/social presences ❸. There is also a link to the online help system ❹.



Forgot Your Password?

To reset your login password, select the 'Forgotten password?' link on the login page ❹. You will then be asked to enter your registered email. Once validated, the portal will send a unique password reset link to your email inbox. If you cannot remember your registered email address, you should either contact your Training Provider direct or contact Atlas Technical Support at support@atlasknowledge.com or by phoning +44 (0)844 247 2121

Courses

Once logged in, you are presented with the 'Courses' page. On this page you will find 2 icons or 'Tiles'. The first Tile will launch the OPITO introduction video. You must watch this video before you can move on to the next Tile, which will give you access to the modules of your assigned version of the online BOSIET course. This could be the BOSIET EBS, BOSIET CA-EBS or Tropical BOSIET course. The correct course for your requirements will have been selected by your training provider. If the presented course is not what you expect, please contact your training provider to discuss and/or change it.

When you select the BOSIET Tile, a new page will open that provides an Introduction video specific to your assigned version of BOSIET (EBS, CA-EBS or Tropical). You must watch the introduction video before you can access any of the 4 BOSIET course modules.

You can exit from a module at any time by selecting the menu icon in the top left of the menu bar and then selecting the 'Exit Module' at the bottom of the displayed menu section.

When you return to this module, you will be taken back to the same point in the module. Note that once you have started a module, you must complete it before being able to move on to another module. You are strongly advised to sit the modules in the suggested numbered sequence:

1. Module 1 – Safety Induction
2. Module 2 – Helicopter safety and escape
3. Module 3 – Sea survival and first aid
4. Module 4 – Firefighting and self-rescue

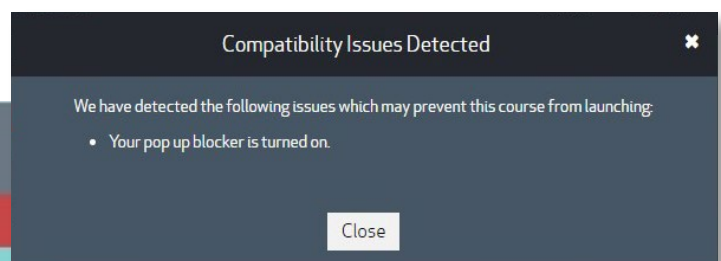
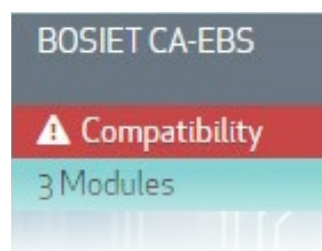
Remember, you must watch the introduction video before you can access any of the 4 modules.

Once you have completed a module, you can return to it at any point. You will then also have access to a 'sitemap' via the menu option, enabling you to directly access specific elements within the module.



Compatibility Issues

The portal will advise you upfront if there are any known issues with your computer configuration. Select the Red warning for more detailed information.

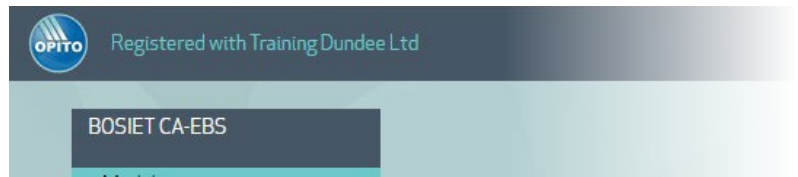


Please resolve any compatibility issues before attempting to launch any of the course modules.

Training Provider Details

On the portal top menu bar to the left will be a notification of which Training Provider you are registered with. Select the Company Name to see the full contact details for this company.

Should you wish to transfer to another Training Provider, then first contact your current Training Provider to have your registration released before a new company can take over your account and retain all history.



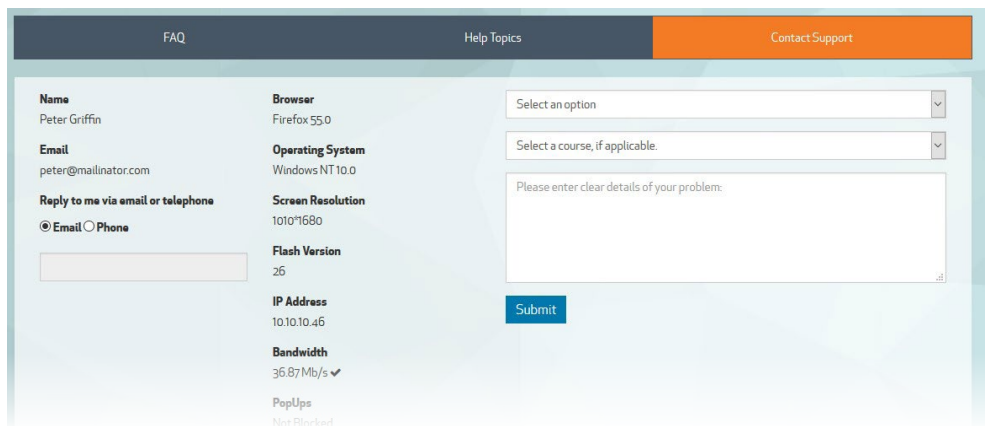
Help and Support

Select the 'Help' button on the top right of the screen to access the online support pages.

Within you will find some FAQs and useful Help Topics.

Selecting the 'Contact Support' section will detect some important system details and allows you to enter a description of your problem.

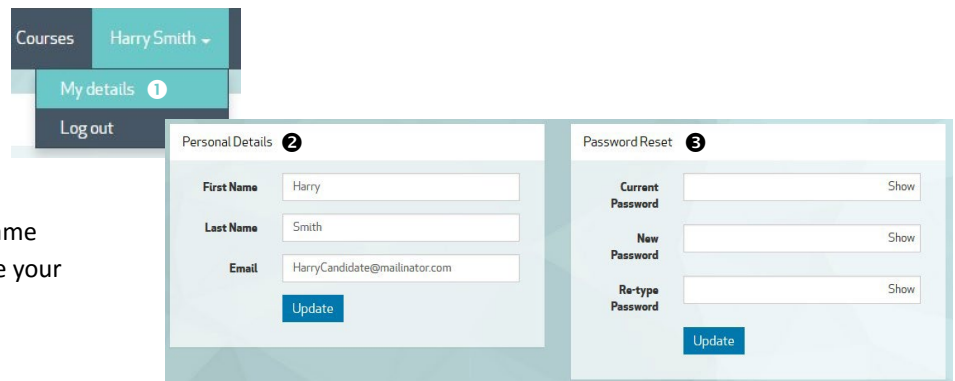
Select the 'Submit' button and your support request will be emailed to the Atlas Technical Support Team.



Edit Personal Details

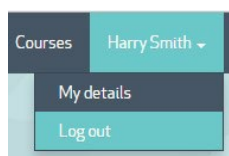
On the top menu bar, select your name to open the Candidate menu. From here select 'My details' ❶

On this screen, you can amend your name and email address ❷ as well as update your current password ❸.



Logout

On the top menu bar, select your name to open the candidate menu. From here select 'Log out' to end this session and return to the log in screen.



Completion

Once you have viewed all introduction videos and have completed all 4 modules, you will receive an email confirmation of your successful completion of the online element of your BOSIET course.

Please make sure you complete all modules prior to attending your scheduled practical day at your selected Training Provider. You will not be able to start your practical training if you have not successfully completed all four online training modules.



Further questions

If you have any further questions or comments please contact your Training Provider direct or contact Atlas Technical Support at support@atlasknowledge.com or by phoning +44 (0)844 247 2121